



EuroMAB 2011

Sharing Sustainable Futures

BiosFAIR

"Sharing Sustainable Futures"

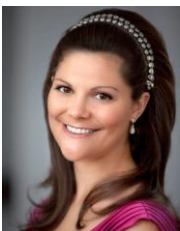
An event during the EuroMAB2011 Conference

7th July 2011

Lundsbrunns Kurort, Lundsbrunn, Sweden

PROGRAM

SUPPORTERS OF THE EUROMAB2011 CONFERENCE :



H.R.H. Crown Princess Victoria
of Sweden,
Duchess of Västergötland



Kevin Jones
Social Capital Markets



Professor Carl Folke
Scientific Director, Stockholm
Resilience Centre



Johanna MacTaggart
Coordinator of Biosphere
Reserve Lake Vänern Archipelago
and Mount Kinnekulle
National MAB Coordinator,
Sweden



Maria Ågren
General Director, Swedish
Environmental Protection
Agency



Professor Johan Rockström
Swede of the year 2010
Executive Director, Stockholm
Resilience Centre



EuroMAB 2011- Sharing Sustainable Futures

4th-8th July

in BR Lake Vänern Archipelago and Mount Kinnekulle



SPONSORS OF THE EUROMAB2011 CONFERENCE :



BLEKINGE TEKNISKA HÖGSKOLA



MARIESTAD



Media Partners:



PROGRAM

10.00	Opening of the BiosFAIR
10.00-17.00	The BiosFAIR – a fair to share sustainable futures Exhibitions, Presentations and Outdoor Demonstrations
12.00-14.00	Lunch (The BiosFAIR does not close during lunchtime)

Presentations will start every 15 minutes. 2 presentations will be held in parallel in different rooms during the whole day (see program. An announcement will be made when a presentation is about to start.

EXHIBITIONS

Biosphere Reserve Wienerwald

By Christian Diry

Czech MAB program

By Eva Jelinkova

Biosphere Reserve North Vidzeme /Nature Conservation Agency, Latvia

By Andris Urtans

ELY-Center Lahti

By Sanna Vääriskoski-Kaukanen

Ecoprofile

By Johan Erlandsson

Silvaskog AB

By Martin Jäntzen

Biosphere Reserve Nedre Dalälven

By Christina Ericson Turstam

Agroväst Livsmedel AB

By Kjell Gustafsson

Energy and climate councellery Götene - Skara municipalities

By Fredrik Hedman

Lidköpings municipality Vinninga pre- and primary school

By Susann Johansson

Biosphere Reserve Östra Vätterbranterna

By Simon Jonegård

University of Gothenburg

By Bo Magnusson

Biosphere Reserve Lake Vänern Archipelago and Mount Kinnekulle Fishing

By Johanna Olsson

Biosphere Reserve Kristianstads Vattenrike

By Åsa Pearce

Westelius Architects

By Mattias Westelius

ac-wellness

By Ann-Charlotte Wiktorsson

Biosfärkommunerna : Municipalities of Lidköping, Mariestad and Götene

By Gun Johansson

Berits textileservice

By Berit Bertilsson

Regional authority of Västra Götaland

By Lave Thorell

County administrative Board Västra Götaland

By Bengt Larsson

Biosphere Reserve Lake Vänern Achipelago and Mount Kinnekulle Ecotourism

By Anette Stilner

Skaraborgsbild

By Nils Axelsson

Formas

Swedish National Commission for UNESCO

Swedish environmental Protection Agency (Statens Naturvårdsverk)

UNESCO

PRESENTATIONS

BROBY ROOM

- 10.30 **Biosphere Reserve Wienerwald :**
11.00 **Networking for a sustainable future -
the most "biospheric" projects**
*By Christian Diry, Manager of the
Biosphere Reserve Wienerwald (Austria).*
- 11.00 **The LTER-network and BRs**
11.30 *By Marcus Drotz, Researcher at the
Vänermuseet, Biosphere Reserve Lake
Vänern Archipelago and Mount Kinnekulle
(Sweden).*
- 11.30 **Biosphere Reserves for conservation
and development? A case study in
Ukraine**
12.00 *By Marine Elbakidze, Researcher at
the Swedish Agricultural University in
Uppsala (Sweden).*
- 12.00 **Republic of Bashkortostan - plans to
join the World Network of BRs and
possible input to EuroMAB**
12.30 *By Valery Neronov, Deputy Chair of
the Russian MAB Committee, and Azat
Kutliakhmetov, Minister of Natural
Resources and Ecology of the Republic of
Bashkortostan.*

LUNCH BREAK

HUSABY ROOM

- 10.45 **Value, functions and main usage
directions of the protected forests
in the biosphere reserves of Belarus**
11.15 *By Valery Lukovich, Deputy director for
scientific and research work, PhD (Republic
of Belarus).*
- 11.15 **"Doing together – learning
together"- How to make a Biosphere
reserve partnership really work?
Experience of the partnership
between Rhön Biosphere reserve,
Germany and Kruger to Canyons
Biosphere Region, South Africa**
11.45 *By Doris Pokorny, PhD and Deputy
Coordinator for the Bavarian Unit at the
Rhön Biosphere reserve (Germany).*
- 11.45 **Biosphere Ambassadors - a useful
resource in marketing a Biosphere
reserve**
12.15 *By Fredrik Hedman, Biosphere Ambassador for
the Biosphere Reserve Lake Vänern Archipelago
and Mount Kinnekulle (Sweden).*

LUNCH BREAK

- | | |
|---|---|
| <p>14.30 Comparative analysis and results of the evaluation of protected areas, which could be candidates for the biosphere sites in Moldova (biodiversity, historical patrimony, development of the Seville Strategy)
<i>By Dumitru Drumea, Head of Department of Biogeocenology and member of the Moldavian National MAB Committee (Moldavia).</i></p> <p>15.30 Towards the First Biosphere Reserve in the Republic of Armenia
<i>By Armen Saghatelyan, DSc (geochemistry, geology), Director of the Center for Ecological-Noosphere Studies of the National Academy of Sciences (Armenia).</i></p> <p>16.00 Overview of the 20-year activity of The West Estonian Archipelago Biosphere Reserve
<i>By Arvo Kullapere, Advisor at the Environmental Board (Estonia).</i></p> | <p>14.45 What was achieved in Russia after EuroMAB2009
<i>By Valery Neronov, Deputy Chair of the Russian MAB Committee (Russia).</i></p> <p>15.15 Transition to Ecological Civilization : Experience of Azerbaijan National MaB Committee
<i>By Urkhan Alakbarov, Academician, Prof., Dr. ; Chairman of the Azerbaijan National MaB (Man and Biosphere) Committee, UNESCO (Azerbaijan).</i></p> <p>15.45 Creating Biosfärurum – a gateway to the Biosphere Reserve
<i>By Lars Hillström, Lecturer in Biology (PhD) at Högskolan I Gävle (Sweden).</i></p> <p>16.15 The LIFE-project “Kinnekulle Plateau Mountain – Restoration and Conservation” opened the door for the Biosphere Reserve
<i>By Maria Thordarson, from the County Administrative Board of Västra Götalands län (Sweden).</i></p> |
|---|---|

OUTDOOR DEMONSTRATION

- The Ecobus outdoor education in BR Eastern Slopes of Lake Vättern -

Jönköping municipality has a bus that takes students (age 13 - 19), one class a day, to different locations where studies and exercises are conducted. The chauffeur/excursion leader are biologists with knowledge in general environmental issues, local challenges in various aspects of sustainable development and local knowledge of biotopes and landowners. One or two teachers accompany the class (often their class teacher and/or biology teacher). The Ecobusday is a part of the education in school, a complement and not a single amusement trip. The ordinary teacher works with the class before and after excursions to prepare and evaluate the experience.

The Ecobus has been in action for 19 years and approximately 35 000 teenagers has experience of one ore more days with it. The goal for the is to create a positive attitude to outdoor studies. Many teenagers today spend very little time in nature and many have a non-European background witch means that they also have very little cultural background to nature and rural areas in Sweden.

Themes that are frequently demanded from the schools are; water environment (examining ground fauna in small rivers or lakes with different Ph or nutrient status), biodiversity in forest (broadleaved forest versus spruce plantations and semi natural taiga), biodiversity in farming landscapes (today's landscape versus farming 200 years ago ore ecological farming compared with conventional), ornithology (visiting bird lakes and "collecting" species with binocular) etc etc.



To fulfill the purposes the bus is equipped with instruments like Ph-meter, conductivity meter, binoculars, camera, TV-monitors connected to a microscope, nets etc. The bus also have extra clothes, raincoats and rubber boots (teenagers always tend to be overoptimistic concerning the whether conditions).

In all kinds of excursion the experience of being outdoors in nature is the central focus. A eutrof lake smells, sounds and looks different than a dystroof one, the spruce plantation is, after a visit to a broadleaved forest, obviously a poor environment for most species. All senses must be involved to create a long-term memory of an excursion day!

We often push the students to do something challenging at the end of the day, it can be a race through a swamp, crossing a storm effected forest with hundreds of logs ore climbing a steep mountain. This more playful part of the day helps to give the lasting, positive, memory of being out. A day near water or swamps

in BR Lake Vänern Archipelago and Mount Kinnekulle

where no one have become real wet is a failure - young people love challenges and, to some extent, mistakes with consequences (being soaking wet for some time). The teacher catches the class with video camera and the film is used later in the classroom, during school meetings with their parents, and, sometimes, to evaluate the interaction within the group. Being out together is good team building.

Linköping university has a programmed resulting in a two-year master's degree. It focuses on how outdoor environmental education and outdoor life can contribute to sustainable development, environmental health and citizenship - read more: <http://www.liu.se/en/education/master/programmes/L7MOE?l=en> and <http://www.mastersportal.eu/students/browse/programme/997/outdoor-education.html>



→ **During the BiosFAIR, the bus will be demonstrated outdoors at Lundsbrunn Kurort.**

Demonstration by Claes Hellsten, from the Biosphere Area Östra Vätterbranterna.

CONTACTS :

Conference website	www.euromab2011.se
Producer BiosFAIR	Ove Ringsby, ove.ringsby@vanerkulle.se , +46 501 39 31 94
Press Officer	Johanna Olsson, Johanna.olsson@vanerkulle.se , +46 501 39 31 95
Producer	Maria Thorell, maria.thorell@vanerkulle.se , +46 501 39 31 96
Coordinator	Johanna MacTaggart, Johanna.mactaggart@vanerkulle.se